

Conservation Areas 2020 Highlights

LSRCA Annual General Meeting

January 22, 2021

Brian R. Kemp

GM – Conservation Lands



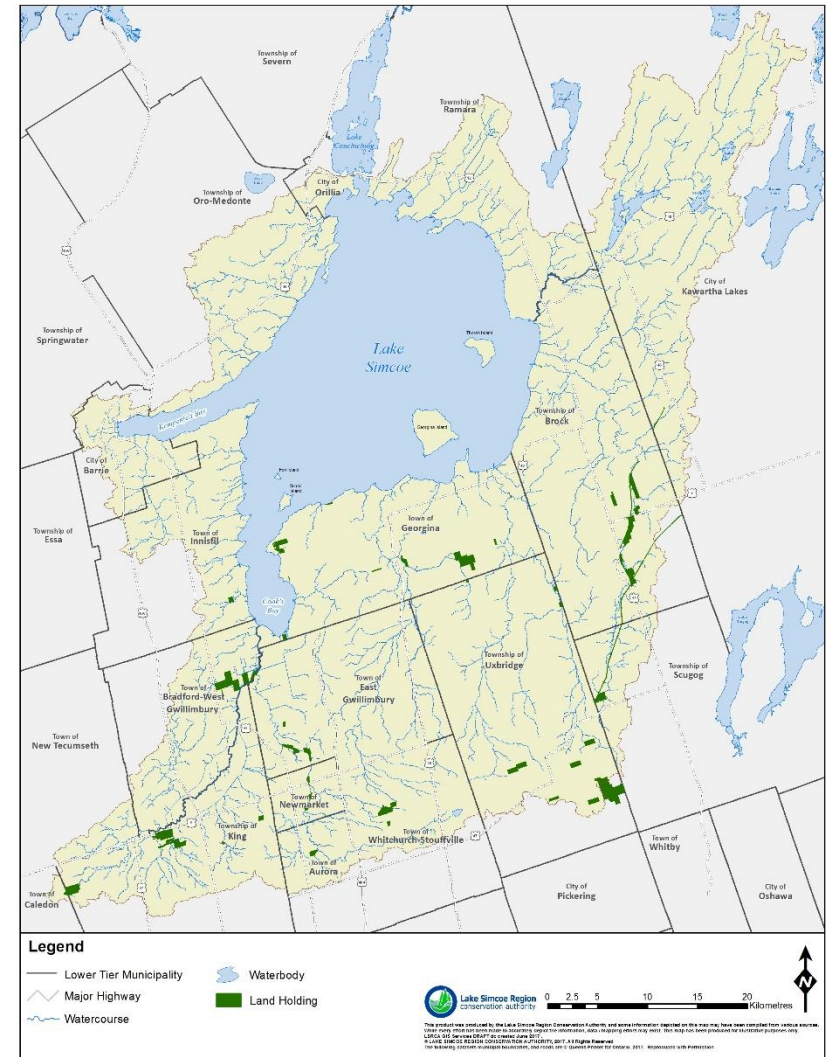
Lake Simcoe Region
conservation authority



Member of Conservation Ontario

LSRCA Conservation Areas

- 🍂 Conservation Area Enhancements
- 🍂 Conservation Area Visitation
- 🍂 Trends and Opportunities
- 🍂 2021 Enhancements



Conservation Area Enhancements

Thornton Bales Conservation Area (King)

☀ Projects

- Management Plan
- Wayfinding Signage
- Greenbelt Route Accessibility
 - Bike Station
 - Entrance Sign and Kiosk
 - Lookout and “99 Steps”
- Trail Closures

☀ Funding

- \$43,000 (\$16,000 LSCF)



Conservation Area Enhancements

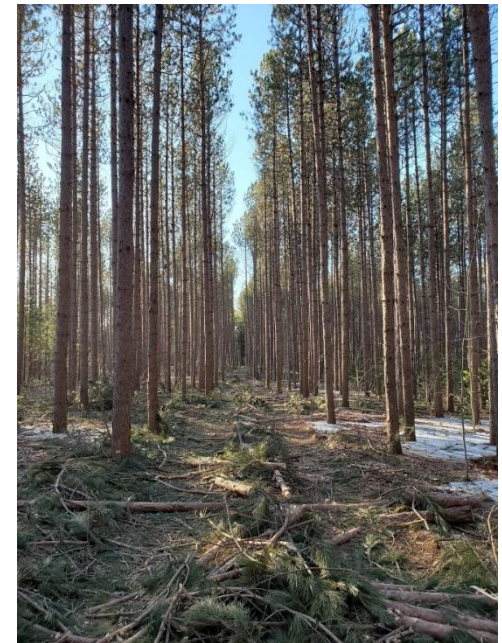
Durham Region Forest – Uxbridge

☀ Projects

- Trailhead Kiosk and Signage (Norton)
- Established Great Trail and ORTA connector trail (Norton)
- Forest Management Activities

☀ Funding

- \$2,220 (\$650 TCT) – Norton Tract
- \$30k-\$155k range – timber sales over last 5 years from forest mgt. activities



Conservation Area Enhancements cont'd

Pangman Springs Conservation Area (W-S)

☀ Projects

- Boardwalk Replacement

☀ Funding

- \$7,000



Beaver River Wetlands Conservation Area (Brock)

☀ Projects

- Emergency Trail Repairs
- collapsed box culvert

☀ Funding

- \$4,500 – grant for \$1,300 from TCT



Conservation Area Enhancements cont'd

Watershed Wide

☀ Projects

- Conducted Property Boundary Assessments and Updates
- Invasive Species Monitoring and Management
- Finalized Maintenance Agreement with Town of Bradford-West Gwillimbury



Conservation Area Visitations

- ✈ Visitation Has Been at All Time High
- ✈ Estimates (10 properties) – 270,000 vs. 189,000 in 2019
- ✈ TBCA – 12,000 vs. 6,500 in 2019 (Aug-Oct)
- ✈ Community Garden (SBCA) – Fully Booked, waiting list in 2021
- ✈ Worth Noting
 - No Site Bookings Permitted
 - CAs Closed for 9 weeks
 - Facilities – Closed/Partially Opened
 - Support from Municipal Partners



Trends and Opportunities

Trends		Opportunities
Recognition of the value of parks to public health	Leads to	Continue to promote linkages between CAs and community health (YR Health)
More demand for naturalized spaces	Leads to	Invest in spaces while balancing human needs with biodiversity protection
Aging infrastructure impacted by increased usage	Leads to	Be more creative while re-thinking spaces (TBCA)
Community collaboration within park settings	Leads to	Continue to provide opportunities for local communities to engage – community garden
Sharing space with multiple users	Leads to	Work with user group to establish use specific areas – ensure positive visitor experience for all

2021 Enhancements

Scanlon Creek Conservation Area (BWG)

☀ Projects

- Master Plan Development
- Develop Emergency Action Plan
- Boardwalk Replacement
- Lookout Replacement
- Creekside Trail Enhancements
- Property Signage Improvements
- Monarch Wayfinding Station and Pollinator Garden



2021 Enhancements continued

Rogers Reservoir Conservation Area (EG)

☀ Projects

- Finalize Maintenance Agreement with Town of EG
- Entrance Signs and Kiosk

Durham Region Forest – Main Tract

☀ Projects


- Improve Visitor Amenities
- Parking Lot Expansion and Gates
- Install Emergency Action Plan Map Posts
- Map Kiosks

2021 Enhancements continued

Watershed Wide Conservation Areas

☀ Projects

- Parking Lot Gates - Scanlon, Whitchurch, Pangman Springs, Sheppard's Bush
- Boardwalk Replacement - Whitchurch
- Lake To Lake Trail - York Region, East Gwillimbury, Georgina
- StoryMaps to Enhance Visitor Experience
- Continue Property Boundary Assessments and Updates
- Continue Invasive Species Monitoring and Management
- Trail Maintenance Agreements - DMBA, ORTA
- Implement Land Disposition Strategy



“With COVID keeping Canadians close to home & reliant on public parks, beaches & trails for health and exercise – we’ve rediscovered deep value for protecting & restoring our connections to water & nature”

Mark Mattson –
Lake Ontario Waterkeeper