

Flood Forecasting and Warning Emergency Management System Project 2016 – 2017

LSRCA Board of Directors

May 27, 2016

Tom Hogenbirk, P.Eng.
Manager, Engineering



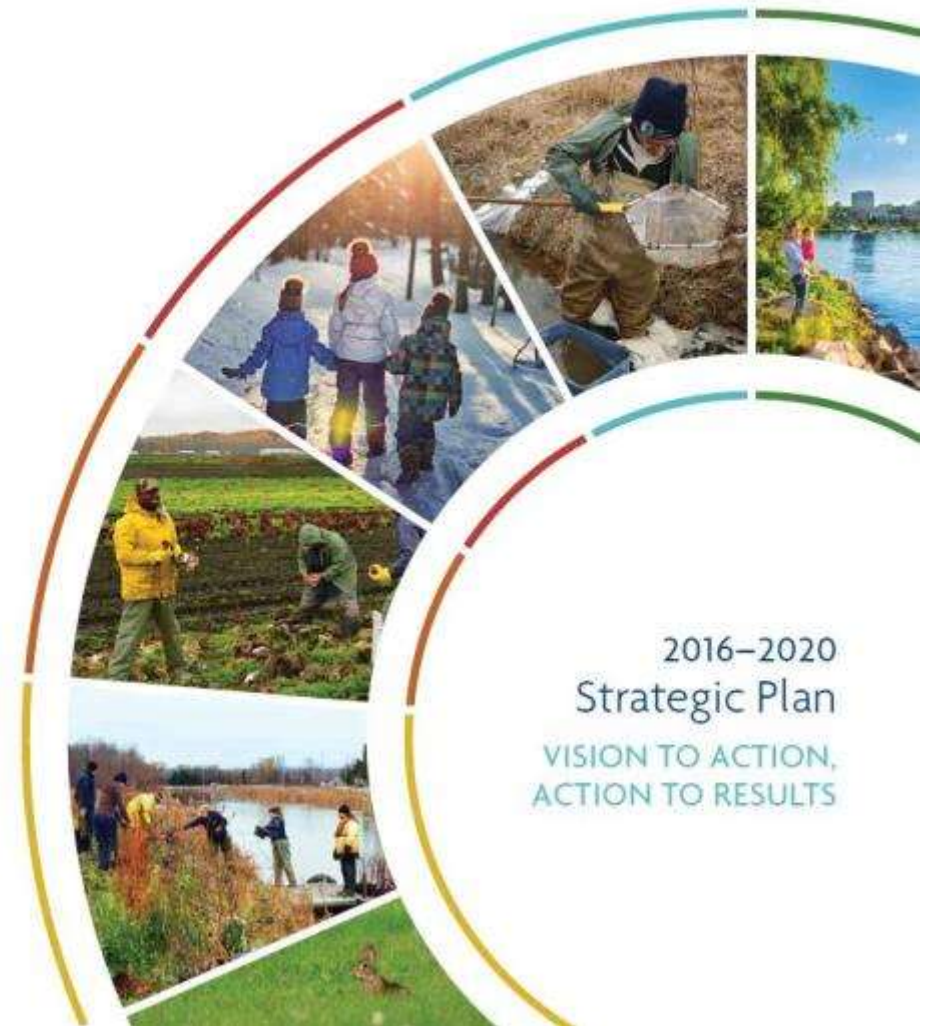
Lake Simcoe Region
conservation authority

2016 – 2020 Strategic Plan

In 2015, the Plan was finalized. It sets our priorities for the next five years and how we will align our resources to achieve success.

Goal One of the Plan states:

“Drawing on our knowledge and using an integrated approach to watershed management, we will shape our future. Our efforts will focus on minimizing or mitigating human impacts within the watershed to achieve a balance between future growth and the ecological needs of the Lake Simcoe watershed.”



Priority Action – Extension of the Emergency Management System (EMS)



GOAL ONE

Support a safer, healthier and livable watershed through exceptional integrated watershed management.

Drawing on our knowledge and using an integrated approach to watershed management, we will shape our future. Our efforts will focus on minimizing or mitigating human impacts within the watershed to achieve a balance between future growth and the ecological needs of the Lake Simcoe watershed.

OUTCOMES:

A Safer Watershed:
Protect People and Property

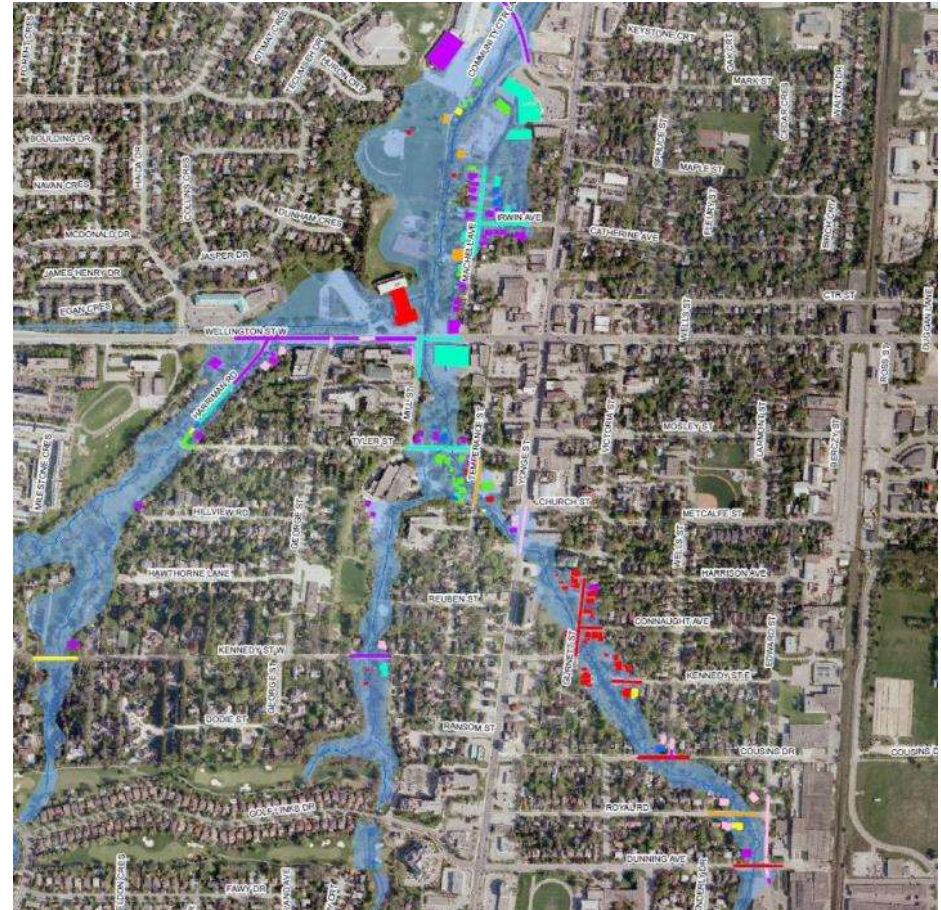


PRIORITY ACTIONS:

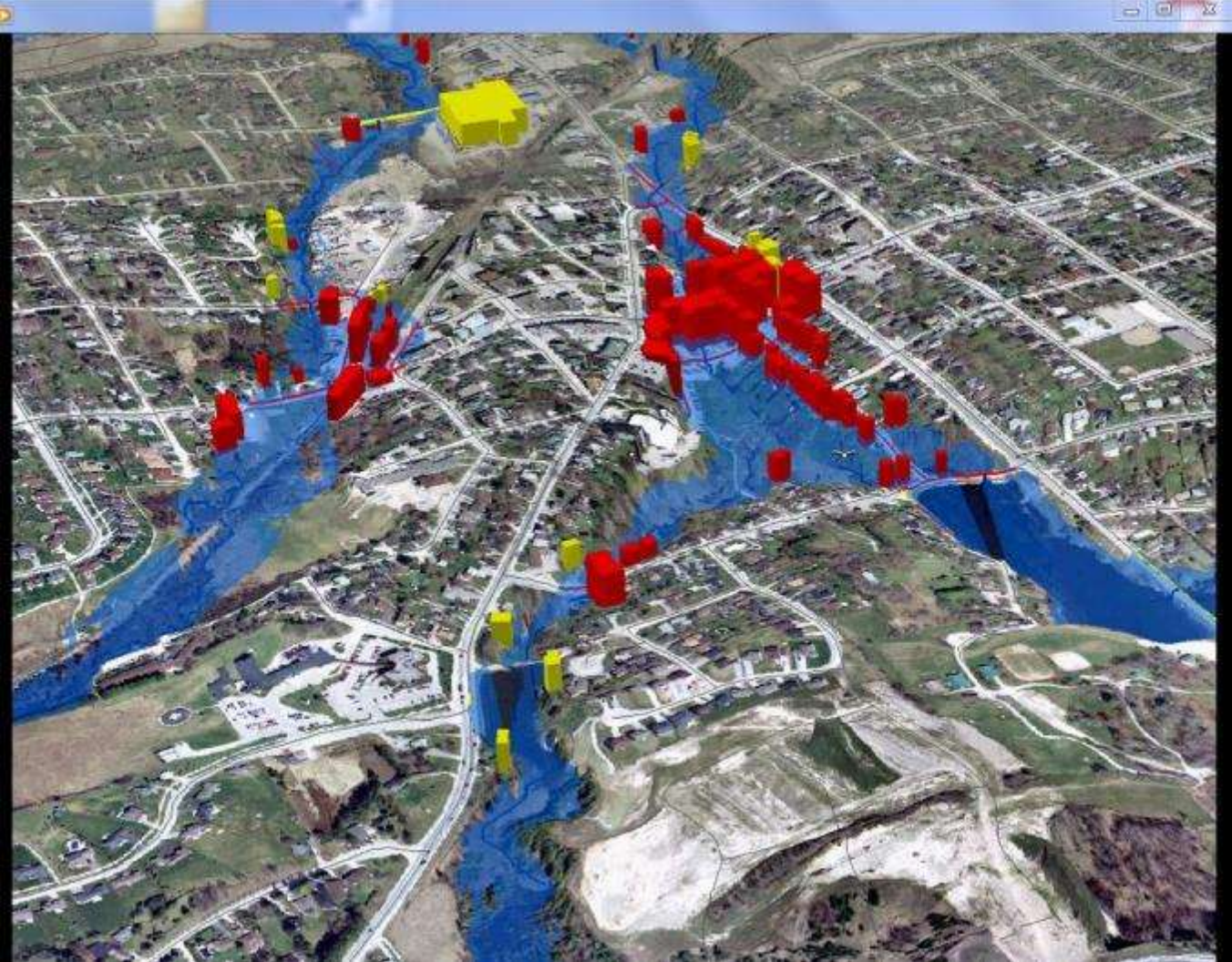
- Develop and implement a flood relief program with interested municipal partners in 5 years.
- Expand the infrastructure risk assessment and protection program for hazard lands across the watershed in 5 years.
- Expand the flood warning and forecasting Emergency Management System throughout the watershed in 2 years.
- Explore opportunities to reduce flood risk by partnering with the insurance industry and others in 1 year.

Emergency Management System Mapping

- The EMS consists of a database and mapping for York and Durham Regions.
- This system identifies all structures which would be flooded by a specific storm event.
- The EMS includes mapping showing impacted structures.

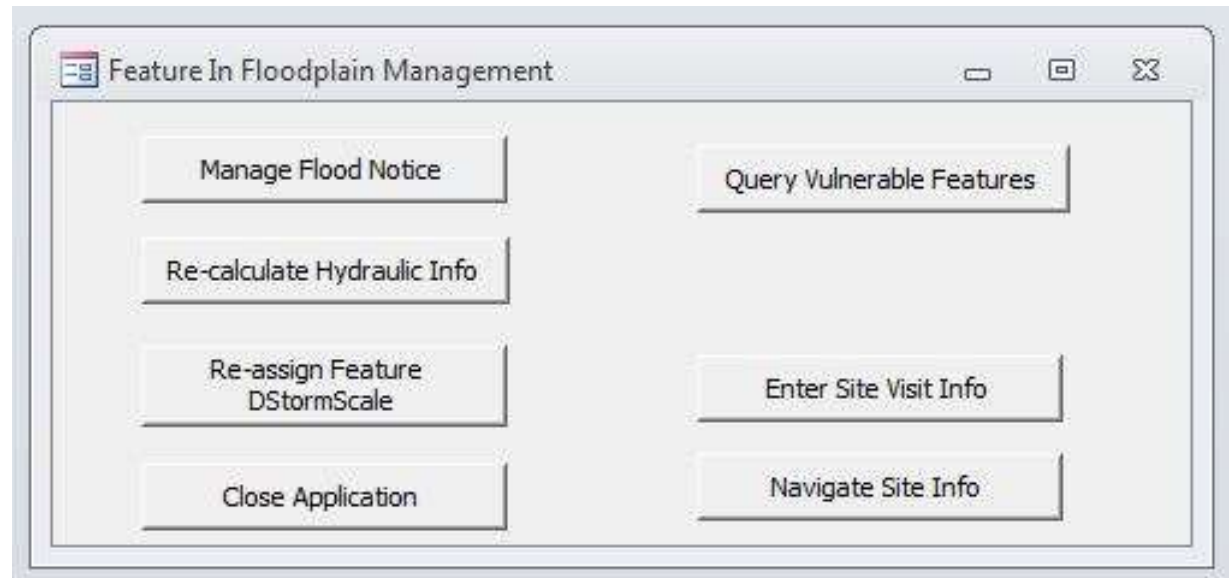


EMS GIS Mapping



Emergency Management System Data Base

The database identifies the locations of structures that would be impacted by specific storms.

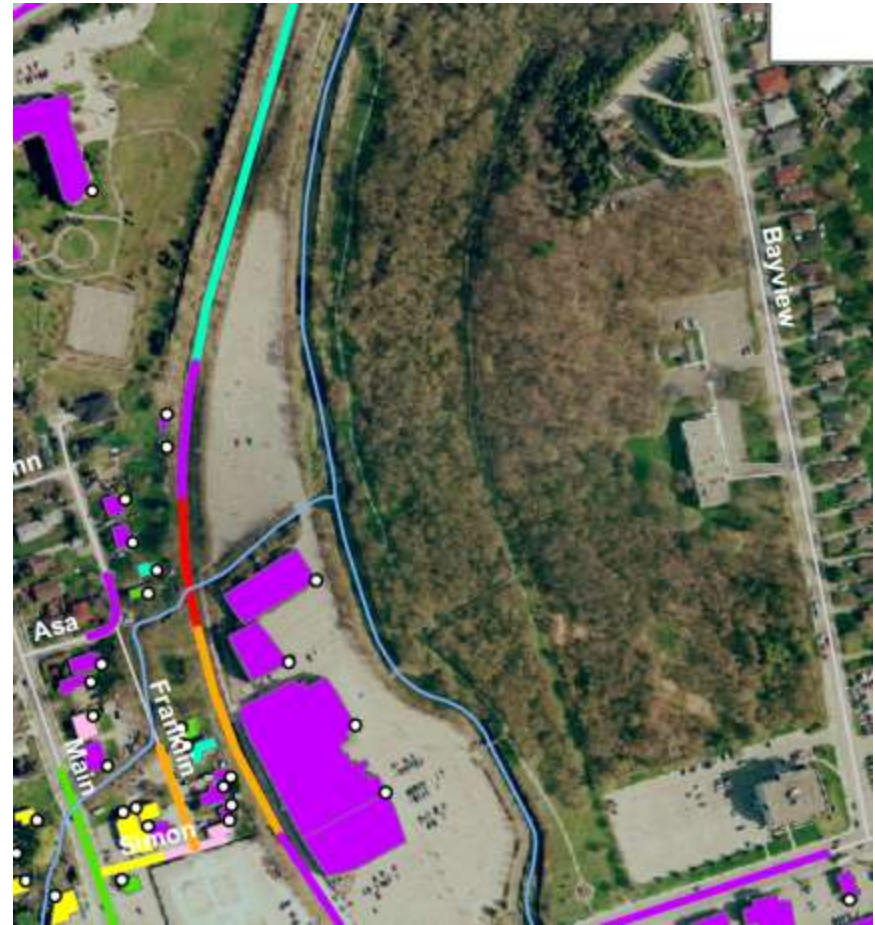


Expand the EMS Mapping and Database to the remainder of the watershed in 2 years

Main Tasks

- Consult with Municipal Emergency Response people in the watershed to determine the desired end product.
- Consult with GTA Conservation Authorities.
- Develop EMS that is user friendly, web based and accessible using smart phones and tablets.
- Associated mapping to be colour coded, depicting the expected frequency of flooding for specific structures including buildings and roads.

- Present draft version of EMS to Municipal Emergency Response people for feedback.
- Revise the proposed EMS based on the above noted consultations.
- Expand this improved EMS format to the remainder of the watershed by the end of 2017.



Questions?

