

# Tree Planting Program Update

LSRCA Board of Directors

June 25, 2021

Phil Davies, R.P.F.

Manager, Forestry & Greenspace Services



**Lake Simcoe Region**  
conservation authority



Member of Conservation Ontario

# Presentation Overview

- Planting Interrupted: The Pandemic
- Back to the Land: Spring 2021
- Spring 2021 projects:
  - York Region: Butternut compensation
  - Durham Region: New family woodlot
  - Simcoe County: Ecological offsetting
- Durham Region: A new planting partnership
- Growing Canada's Forests: 2 Billion Tree Program



# Pandemic Impacts: Planting 2020

- Spring program shutdown
  - Employee safety concerns
  - Supply chain challenges
- Projects deferred
  - Nursery orders held
- Fall projects
  - Smaller program delivery
  - 1,800 trees on 6 sites



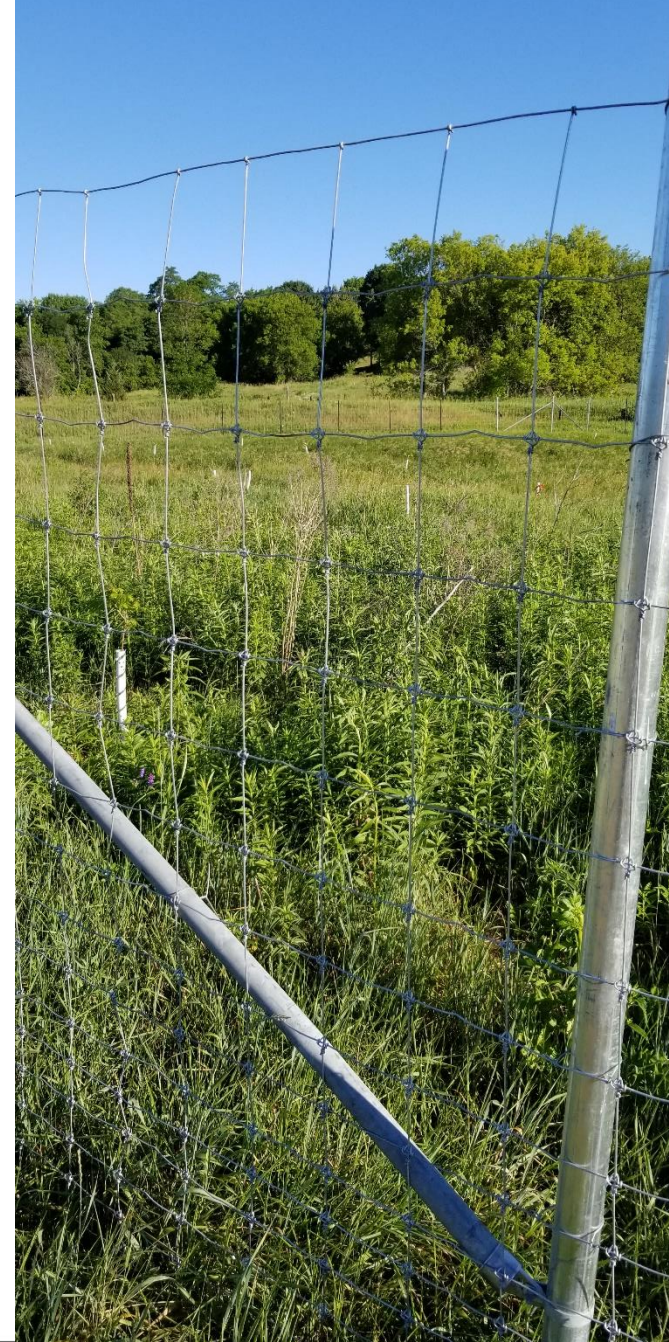
# 2021 – Back to the Land

- Robust Safety protocols
- Contracted herbicide services
- Planting program
  - 49,500 Trees & 25 Landowners
- DIY Tree Sale – Curbside pick-up
  - 13,600 Trees & 103 Customers
- “Community” events
  - 6,500 Plants & 13 Sites
  - Planted by Restoration staff



# East Gwillimbury: York Region

- Voluntary Butternut Compensation
  - Endangered Species
  - Sanitary servicing project
  - 40 trees planted for 1 tree
- Rogers Reservoir CA:
  - Ongoing restoration
  - Wetland, grassland, tree planting
- Extra Measures: 2 Years
  - Fencing, Watering & Competition control



# Brock Township: Durham Region

- Leaving a legacy
  - 4,350 trees on 2 properties
- Environmentally-minded
  - Hobby farming: Animals, fruit trees, vegetables
- Anticipated to be first of several plantings
  - Building positive relationships



# Innisfil: Simcoe County

- Town Property
  - Existing woodlot expansion
- Funded through Ecological Offsetting Program
- 3,830 trees
  - 2<sup>nd</sup> Planting
  - Conifers & hardwoods for diversity
- Community recreation site
  - Site to feature walking trail



# Durham Region Planting Program

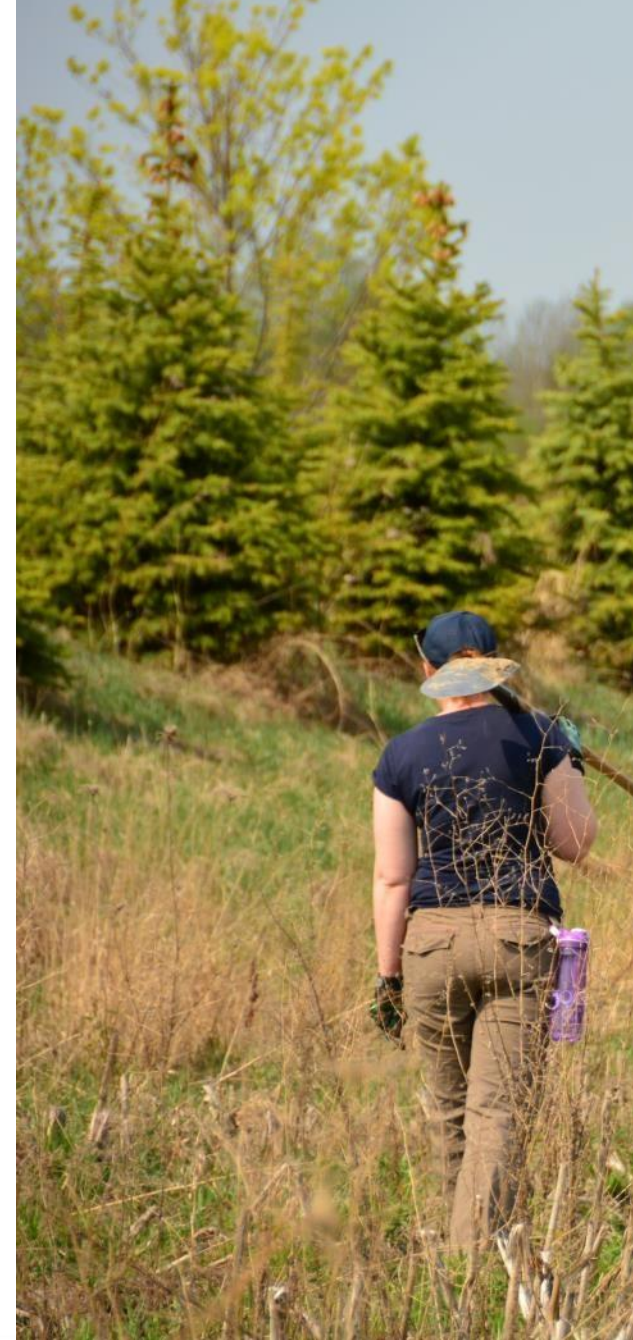
- Response to Declaration of Climate Emergency
- Partnership: 5 Conservation Authorities
- 3-year initiative
  - Durham funding: \$416,000
  - Target: 279,000 trees
  - Program value: \$1.74 Million
- Approach:
  - Program promotion
  - Landowner outreach
  - Leverage partner funding





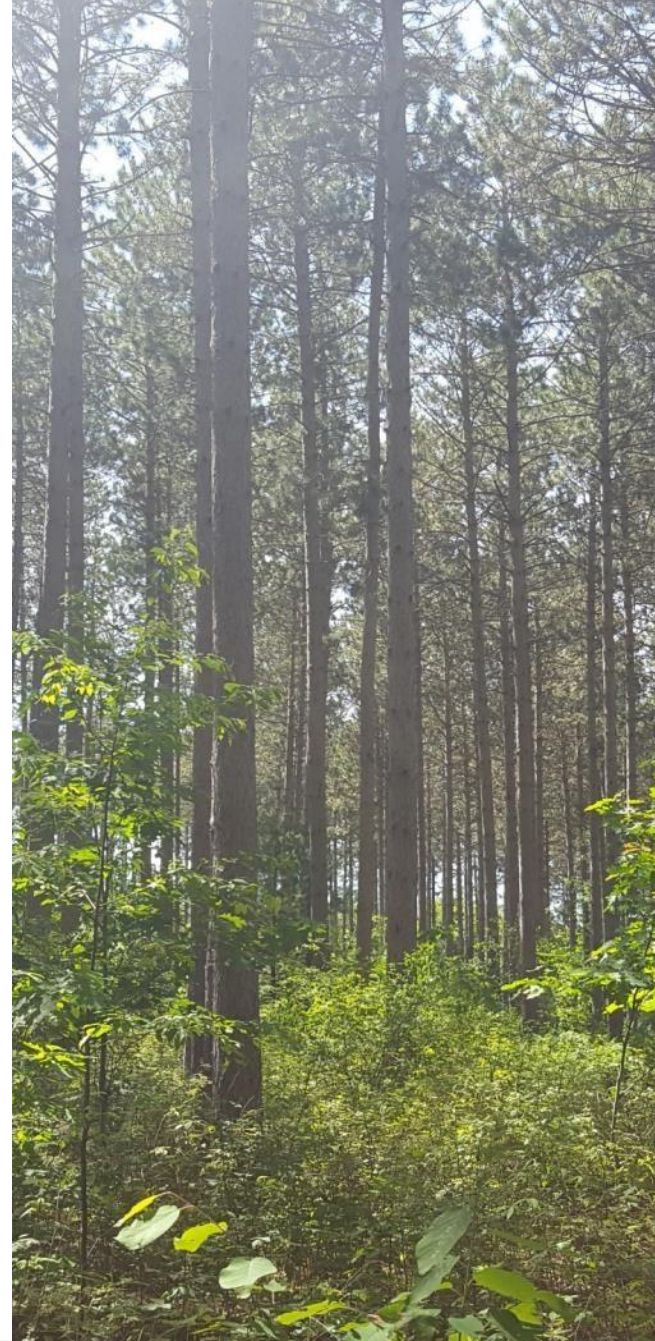
# Growing Canada's Forests:

- National funding program
  - Nature-based solutions for climate change
  - 2030 Paris Agreement commitments
- Phase 1: Request for Information
  - Recommendations for success
- Partnership submissions
  - Durham Region conservation authorities
  - Forests Ontario & provincial planting partners



# Looking Ahead

- Establishing New Afforestation Targets
  - Watershed natural heritage
  - Climate change mitigation
  - Community health benefits
- Considering new implementation approaches
  - Contracted planting services



# Thank-you

We'd be happy to assist with planting projects in your municipality

[www.lsrca.on.ca/funding/tree-planting](http://www.lsrca.on.ca/funding/tree-planting)



# LDD Moth

## *(Lymantria dispar dispar)*

- Outbreak Forecasted
- Host trees
  - Oak! (& many others)
- Life Cycle
  - Hatch & Feed: May/June
  - Pupate: June/July
  - Moth stage: July/August
- Tree Impacts
- Good News!
  - NPV Virus spreading

