

FIXED LINK PROJECT INTRODUCTION

LSRCA BOARD OF DIRECTORS



Chippewas of Georgina
Island First Nation



September 24, 2021
Virtual Meeting

COMMITMENT TO THE FIXED LINK



Pre - 2008

Federal commitments for a bridge were in place but changes in government resulted in changes in priorities.



2008 - Neegan Burnside Report

The community has Neegan Burnside assess and document the potential for a fixed link to Georgina Island

- Well received
- No commitments to proceed

2018-19

Community Mandate

Community formally supports leadership to make the Fixed Link a priority at community meeting



2019 CIPS Engaged

CIPS Engaged to manage the 'idea' and develop the community project understanding

2019

WSP Engaged

WSP engaged to develop the GIFL Fixed Link Project Plan



2021 Council Resolution

GIFN Chief and Council formally resolve to complete a Fixed Link by 2030.



COMMUNITY ASSESSMENT FIXED LINK COMMUNITY VISIONING (2019-2020)

Community Understanding of what would be involved

- The Chippewas of Georgina Island First Nation adopted the following Project Vision:

“Chippewas of Georgina Island First Nation is a responsible and sustainable community that values safety and community health. A fixed link will offer the community with safe passage during all seasons while protecting the environmental, cultural, social and economic future of the community.”

Key Community Engagement Directives

- Build it now – don't wait
 - Should be on a route we are used to
- Keep us safe (While In Transit / From Outsiders)
 - Protect Lake Simcoe
 - Protect our environment



THE COMMUNITY DIRECTIVE

'PROTECT THE LAKE AND ENVIRONMENT'

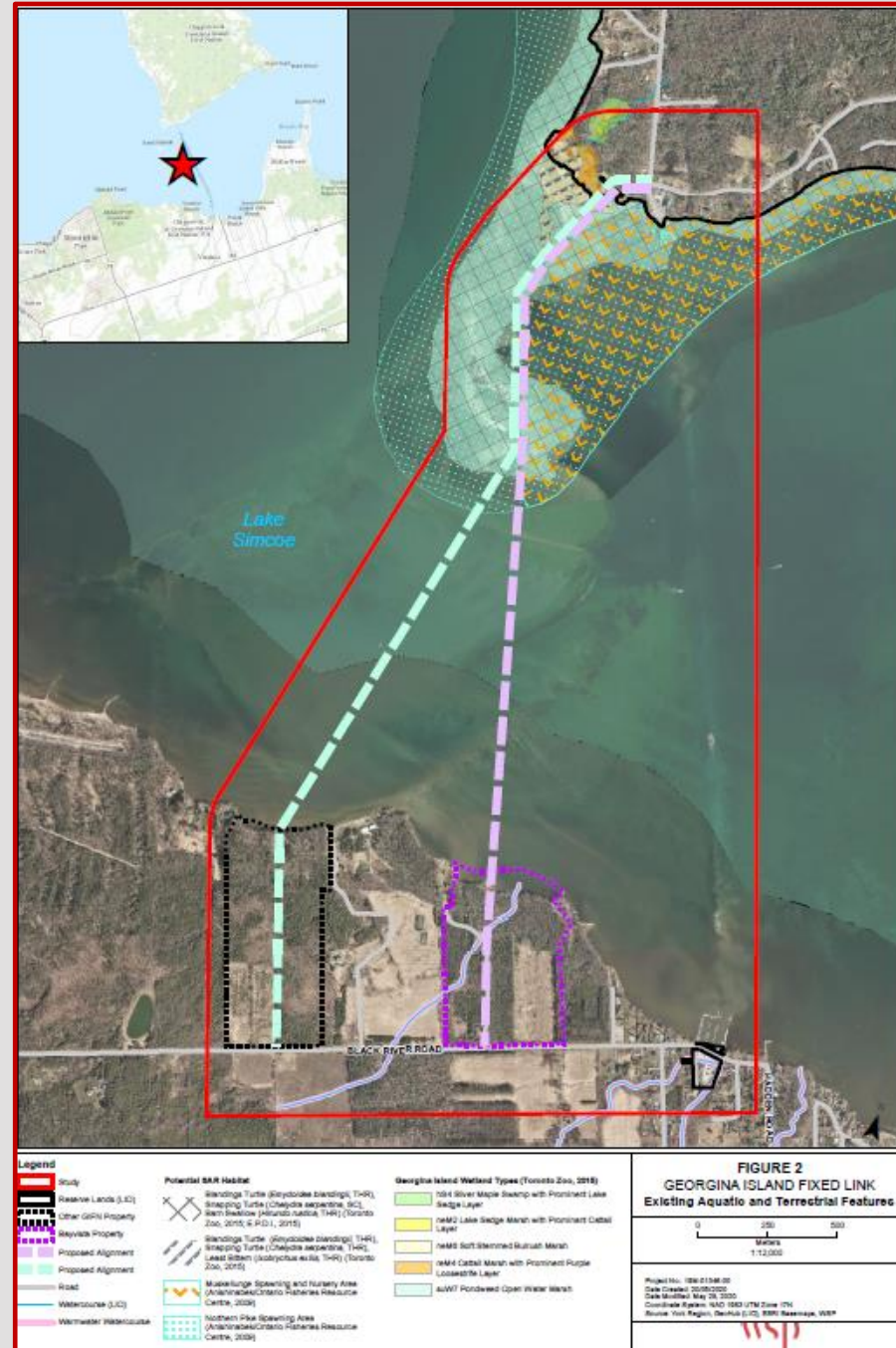
- The Chippewas of Georgina Island First Nation take the impacts this project may have on Lake Simcoe and the environment seriously.
- The community has been very clear during engagements:
 - We understand that our current transportation system negatively impacts the Lake and environment now.
 - We understand that this project will impact Lake Simcoe through all phases of assessment, design, construction and use.
 - We must work with Mother Earth, traditional knowledge and western science to ensure we:
 1. Understand the impacts to the Lake and environment
 2. Investigate impact avoidance measures whenever possible
 3. Ensure comprehensive mitigation measures are used when required
 - We do not have the human resources or fulsome skills in the community to fully comprehend the impacts that may result from this project and therefore must look to others to support us.
 - Lake Simcoe Stakeholders
 - Lake Simcoe Regional Conservation Authority
 - CIPS / WSP (Other professional service firms)



TECHNICAL ASSESSMENT FIXED LINK TECHNICAL VISIONING

WSP Technical Review

- No ground based investigation or reviews conducted
- Review 2008 Neegan Burnside Study
- Desktop review of potential 'deal-breakers':
 - Environmental Planning Needs
 - Ecology Factors
 - Traffic Factors
 - Civil Road Understanding
 - Hydrogeology Understanding
 - Geotechnical Desktop reviews
 - Contamination research
 - Archaeology needs assessment
 - Natural Heritage understanding
 - Air/Noise requirements



FIXED LINK PROJECT – TECHNICAL VISIONING CONTINUED

Technical Assumptions Developed

- The Fixed Link will connect:
 - Black River Road to existing section of Bear Road and Chief Joseph Snake Road on the Island.

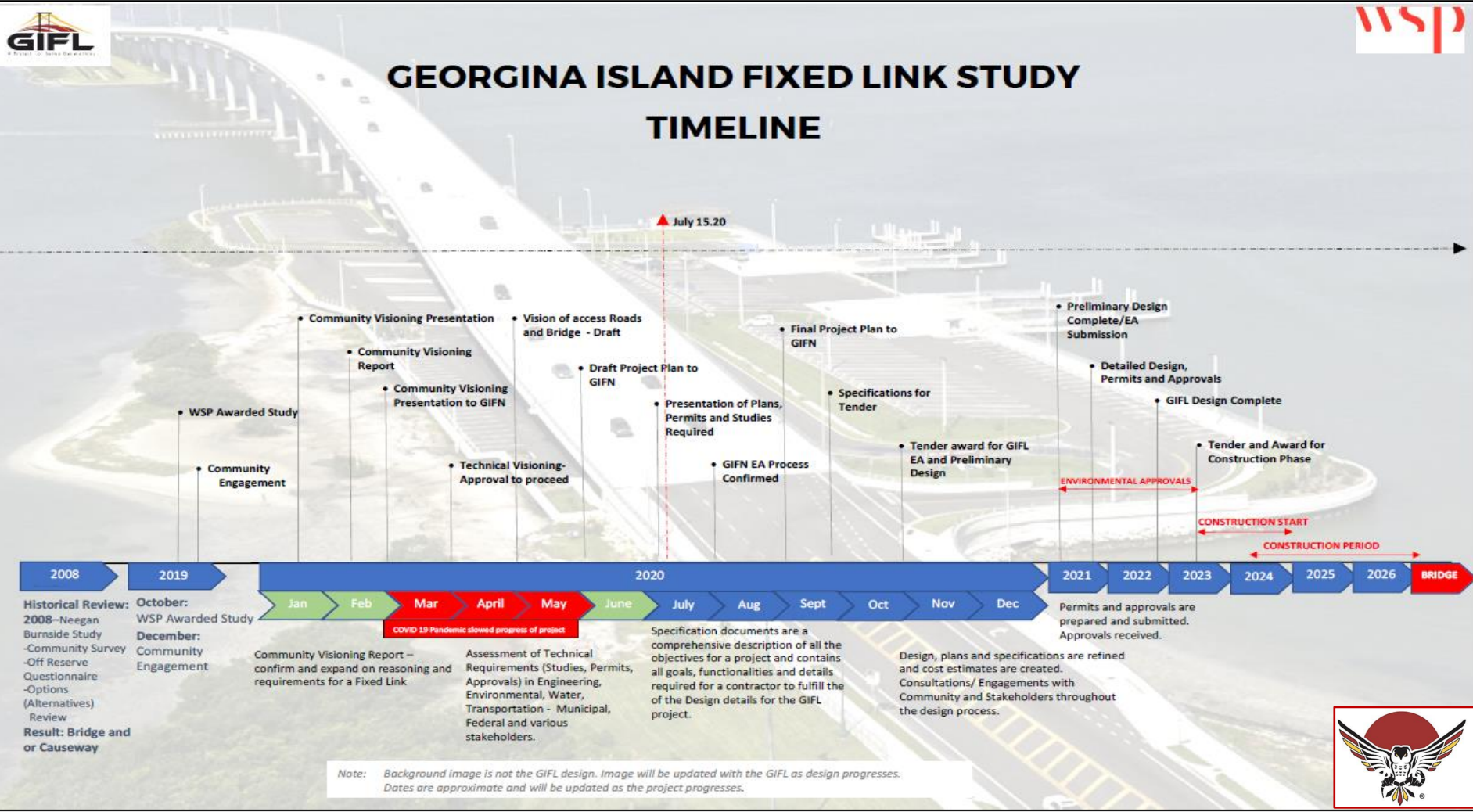
- Will require 3.3 km of roadway –
 - 1 km of roadway + 2.3 km of Fixed Link:
 - 800m causeway to bridge
 - 700m elevated Bridge
 - 800m causeway to mainland

- These are assumptions
 - Design based on vision has been examined, but not fully studied – why?
 - Need to fully evaluate the impacts of the project prior to investing heavily in design
 - Rerouting due to species at risk
 - Soils insufficient in certain space





GEORGINA ISLAND FIXED LINK STUDY TIMELINE



CHIPPEWAS OF GEORGINA ISLAND FIRST NATION

COUNCIL RESOLUTION

FEBRUARY 17, 2021

The Chief and Council...

1. **Reaffirm that ancestors used a natural land link**
2. **Reaffirm the loss of the land link during Trent Severn construction**
3. **Confirmation that there is not a single, safe, secure and reliable all weather transportation method currently**
4. **Confirmation that the community feels unsafe crossing the Lake during the winter months**
5. **Confirming that community members have lost their life attempting to cross the Lake**
6. **Affirming that climate change is affecting the Lake and making crossing unpredictable**
7. **Affirming that a safe, secure and reliable all weather transportation method is of paramount importance**
8. **Affirming that research has indicating that a Fixed Link, comprised of causeway and bridge will offer safe passage**
9. **Affirm that the GIFN Members, through consultation and engagement have directed the Council to proceed with the planning, design and construction of a Fixed Link as the most desired solution**

And therefore resolved:

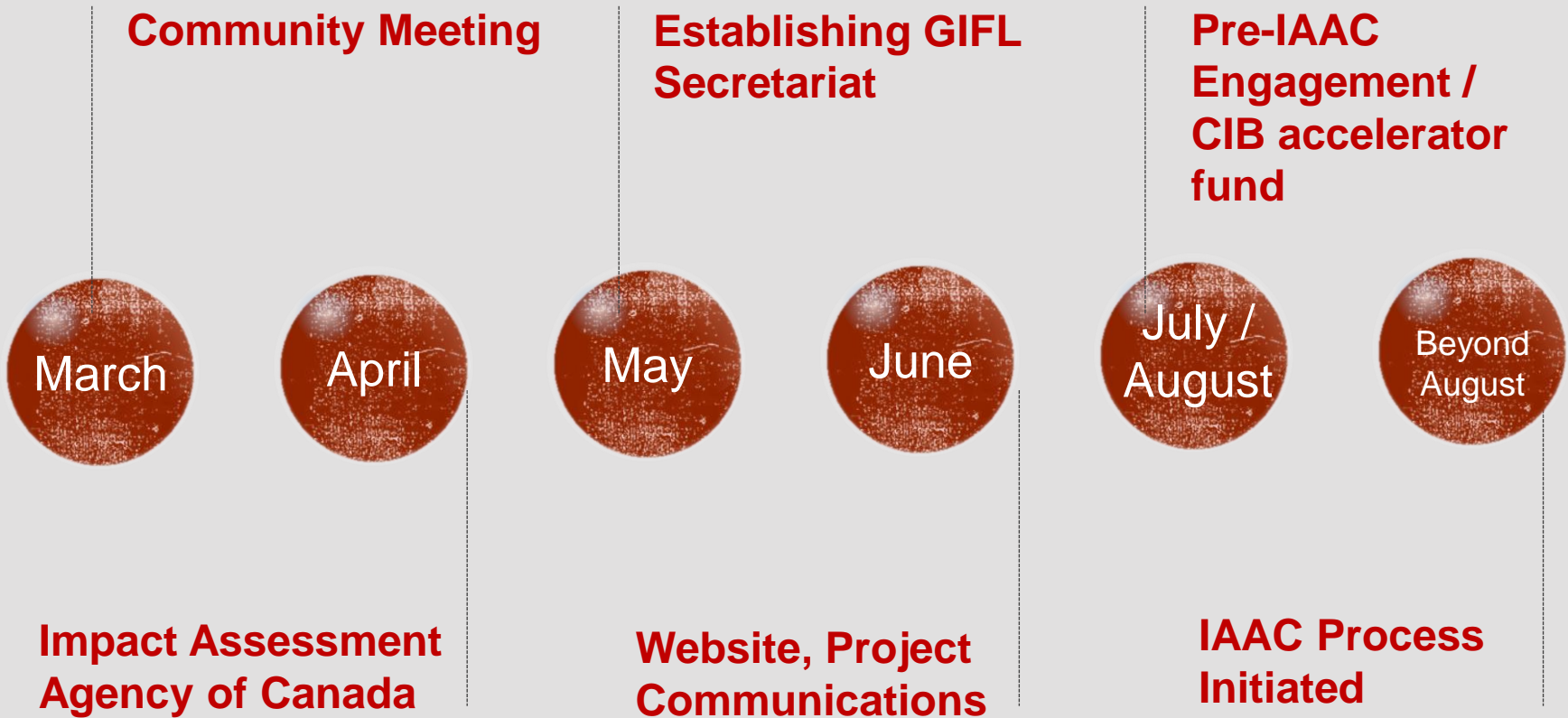
- **The Chief and Council of the Georgina Island First Nation intend to build a Fixed Link that will connect Georgina Island to the mainland**
- **The Chief and Council desire to complete the Impact Assessment by December 31, 2024**
- **The Chief and Council intend to have the Fixed Link operational by December 31, 2026**

Expenditure - Dépenses		Autorisations de dépenses		Source of Funds / Source des fonds		Expenditure - Dépenses		Autorisations de dépenses		Source of Funds / Source des fonds	
Accounting officer - Responsable de la comptabilité	Signature	Date	Signature	Accounting officer - Responsable de la comptabilité	Signature	Date	Accounting officer - Responsable de la comptabilité	Signature	Date	Accounting officer - Responsable de la comptabilité	Signature

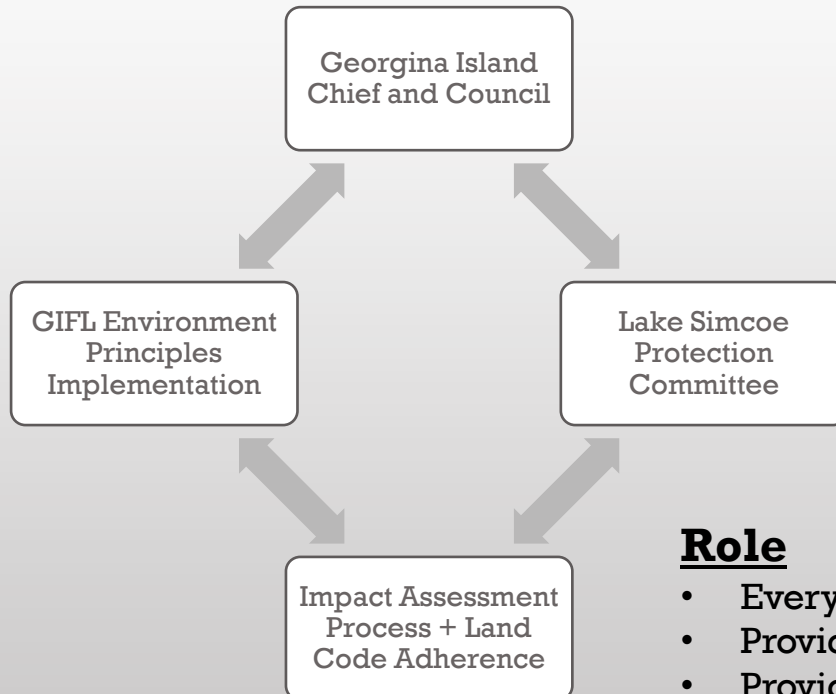
80-5 (2-80) 7530-21-036-8562 Canada



FROM RESOLUTION TO TODAY



DESIRED LAKE SIMCOE/ENVIRONMENT PROTECTION PROCESS



Lake Simcoe Protection Committee

- Community Members of GIFN (2)
- Lake Simcoe Stakeholders
- GIFL Secretariat Technical Team
- Who else?

Role

- Every study or evaluation will go through the committee 2x
- Provide input into study design (protect & forethought)
- Provide comment, concern and alternatives into impacts and proposed avoidance or mitigation
- Advice will be promoted to Chief and Council for review
- Point of contact for all LS Stakeholders?
- Two meetings will be built into every RFP



DESIRED LAKE SIMCOE/ENVIRONMENT PROTECTION PROCESS

LSRCA Relationship

- We desire your professional, science-based eyes.
 - To confirm to our community that we are protecting the Lake
 - To affirm our protection processes are valid and accepted beyond the FN community
- We need your information
 - To ensure we are not reinventing a process or redoing work that has already been done
 - To confirm our Traditional Knowledge for third party reviewers (as a development proponent)



DISCUSSION – Q&A

Subscribe at:

www.gifixedlink.com

Contact the Secretariat

gifl@indigenouseaware.com

